



ELECTROSPUN SYNTHETIC SCAFFOLD PLATFORM OVERVIEW



AUTOBIOLOGIC™ SCAFFOLDS: POWERING THE HEALING RESPONSE



INTRODUCTION

ENGINEERING THE HEALING MICROENVIRONMENT: THE ATREON AUTOBIOLOGIC™ PLATFORM

Autobiologic™ (noun): Atreon's synthetic scaffold approach to tissue repair that leverages the patient's own biology to optimize the microenvironment by capturing and supporting healing factors to address the fundamental drivers of tissue repair.

THE PROBLEM

BIOLOGIC LIMITATIONS IN HEALING

Despite advances in surgical technique and fixation, soft tissue repair continues to face persistent biologic challenges:

- Poor biologic environment at the repair site
- Prolonged inflammation and incomplete healing
- Scar-mediated repair instead of native tissue regeneration

THE SOLUTION

ELECTROSPUN SCAFFOLDS DESIGNED TO ORCHESTRATE THE OPTIMAL ENVIRONMENT FOR TISSUE REPAIR AND REMODELING

Electrospun Nanofiber Matrix Technology

Mimics native extracellular matrix (ECM), providing a highly porous scaffold for cell attachment, migration, and proliferation.

Biologic Wicking

Absorbs and retains autologous blood, cells, and growth factors delivering biology directly to the repair site (~500% absorption).

Biocompatible Synthetic Polymers (PGA + PLCL)

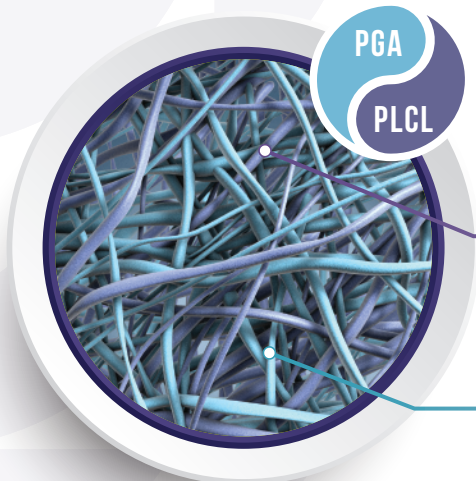
Engineered material provides a controlled biphasic degradation and high quality manufactured product without variability associated with tissue processing.

- **PGA: Polyglycolic acid**

Resorbs quickly, opening porosity allowing for cellular communication & infiltration

- **PLCL: Poly(lactide-co-caprolactone)**

Resorbs over time, providing structure for the cells to proliferate



HEALING CASCADE

A BIPHASIC MECHANISM OF ACTION SUPPORTING THE HEALING CASCADE

Atreon's scaffolds are designed to actively participate in the healing cascade through both physical structure and chemical signaling.

INFLAMMATORY RESPONSE DAYS 0-3

WICKS AND HOLDS BIOLOGIC FACTORS

- Kickstarts cellular activity and recruitment
- Stimulates a low pH microenvironment and contributes to wound homeostasis

CELLULAR COMMUNICATION DAYS 1-45

CELLULAR COMMUNICATION

- PPGA resorption via degradant-driven release, facilitating increased porosity
- Promotes cellular infiltration and communication
- Balances inflammatory response

MATURATION & REMODELLING DAYS 30-300

MATURATION & REMODELING

- PLCL resorption via degradant-driven release, providing structure for cellular proliferation
- Collagen deposition provides structural support for tissue organization
- Drives angiogenesis and collagen formation, enabling transition to native tissue

BIOACTIVE DEGRADANTS

Glycolic Acid^{6, 7, 14}

- Modulates inflammation
- Promotes fibroblast proliferation & collagen expression

Lactic Acid^{1, 13, 14}

- Stimulates VEGF expression & enhances cellular migration
- Promotes angiogenesis & ECM deposition

Caproic Acid^{7, 19}

- Addresses microbial contaminants
- Modulates inflammation

COMPREHENSIVE PRODUCT PORTFOLIO

A unified synthetic scaffold platform leveraging the same proven polymers and precise manufacturing process designed to address healing challenges across multiple indications. Product-specific resorption profiles are engineered to align with the biologic timelines of tissue healing and remodeling for each intended application.

 <p>Reinforcement of suture-tendon interface where poor quality tissue is a concern</p>  <p>RESORPTION: ~4-6 MONTHS THICKNESS: 1.7MM</p>	 <p>Interpositional, tendon-bone (entheses) healing</p>  <p>RESORPTION: ~3-4 MONTHS THICKNESS: 0.85MM</p>	 <p>Tendon wrapping and capsular closure with low profile design</p>  <p>RESORPTION: ~2-3 MONTHS THICKNESS: 0.45MM</p>	 <p>Full-to partial-thickness wounds, including exposed bone and tendon</p>  <p>RESORPTION: ~10-14 DAYS THICKNESS: 0.20MM</p>
---	--	---	--



KEY ADVANTAGES

- **Designed for Ease of Use:** Simple deployment and efficient technique that integrates seamlessly into existing surgical workflows
- **Cost-Effective:** No need for additional fixation or instrumentation
- **Biocompatible & Safe:** 100% synthetic, engineered composition eliminates variability
- **Robust Handling Characteristics:** Accommodates positioning, suturing, and trimming as needed
- **Simple Storage:** No added complexity of tissue storage or handling



Arthroscopic image demonstrating biologic wicking at the repair site with ROTIUM® Bioresorbable Wick



BIOCHARGE® AUTOBIOLOGIC MATRIX

Integrated onlay reinforcement of suture-tendon interface
for rotator cuff repairs

- Addresses suture cut-through risk in cases of compromised bursal-sided tendon tissue
- Designed for maximum efficiency with an integrated, single-step delivery system
- Clinical application examples: *Rotator Cuff Repair, Subscapularis Repair*



ROTIUM® BIORESORBABLE WICK

Tendon-bone healing in the rotator cuff
and other interpositional applications

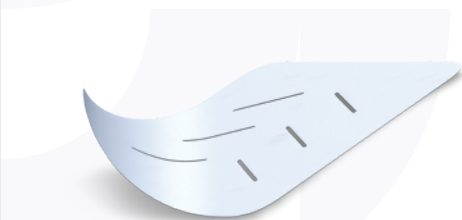
- Drives early native tissue integration, leading to a reduction in retear rate, demonstrated by clinical outcomes
- No ancillary instrumentation or additional fixation needed
- Clinical application examples: *Rotator Cuff, Achilles (Haglund's), Glute Med, Extensor Mechanism Tendons, Kidner*



ROTIUM® LO PRO BIORESORBABLE WICK

Tendon wrapping, onlay, and capsular closure
for all tendon repair needs

- Retain and concentrate native biologic factors to optimize soft tissue healing
- A low profile, flexible construct minimizing bulk for constrained anatomical spaces
- Clinical application examples: *Achilles (mid-substance), Foot & Ankle (e.g. peroneal), Capsular Closure, Biceps or Triceps Tendons, Hand Flexor Tendons, Hamstring*



PHOENIX WOUND MATRIX®

Full-to-partial thickness wounds
including complex & traumatic defects

- Transforms wound pH to restore homeostasis, provides a better barrier against biofilm formation, and promotes tissue granulation
- Easily conforms to various wound types with fenestrations that allow for management of exudate
- Clinical application examples: *Surgical Wounds (Donor Sites/Grafts, Wound Dehiscence), Revision Arthroplasty, Limb Salvage, Necrotizing Fasciitis, Trauma Surgery*

CLINICAL & SCIENTIFIC EVIDENCE

BACKED BY 17+ YEARS OF TISSUE ENGINEERING RESEARCH AND DEVELOPMENT, ATREON'S TECHNOLOGY IS SUPPORTED BY COMPELLING EVIDENCE

- Validated outcomes across healing, strength, and biology
- Demonstrated benefit in both acute and chronic injury models
- Zero reported adverse events (internal data)

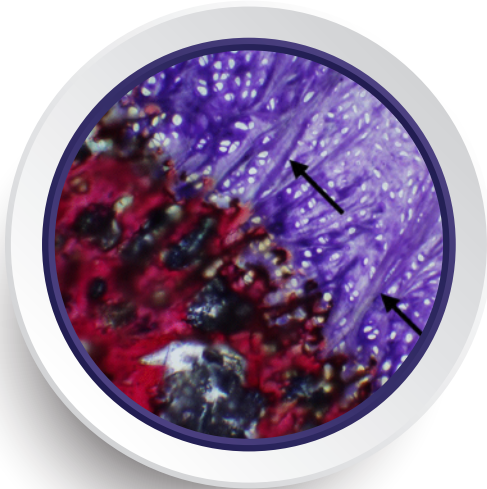


Awarded Best Basic Science Paper in 2023 by JSES and ASES

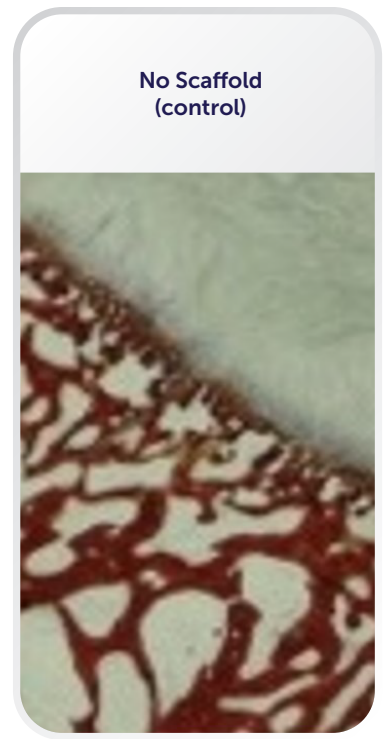
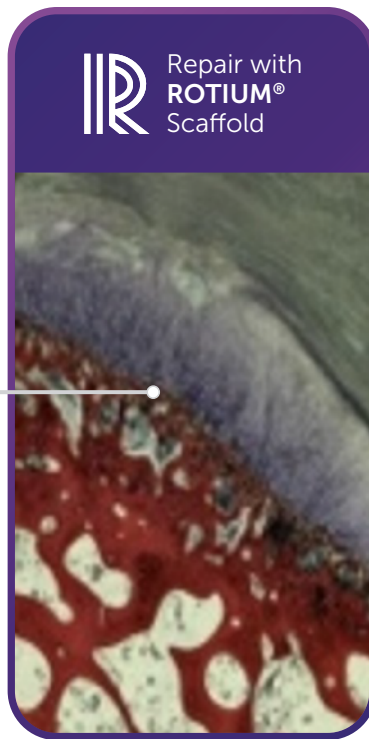
PROVEN RESULTS AT THE TENDON-BONE INTERFACE¹⁰

In-vivo study demonstrated:

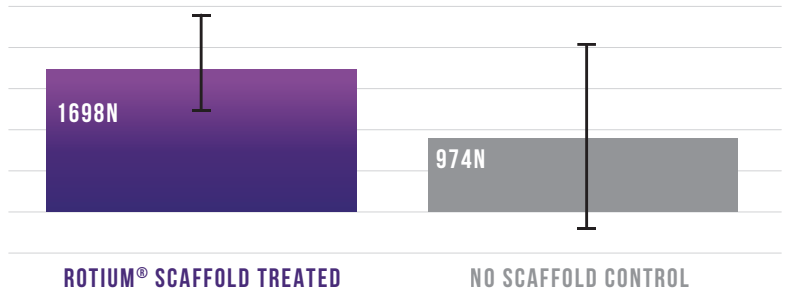
- Clear evidence of remodeling and structural integrity at the enthesis
- ~75% increased repair strength
- More consistent repair performance compared to control



Development of Sharpey's-like fibers at the tendon-bone interface with ROTIUM at 12 weeks, magnification x10



MEDIAN ULTIMATE BREAKING STRENGTH (N) AT 12 WEEKS **74%** INCREASE



PRODUCT PORTFOLIO

PART #	DESCRIPTION
FG-0007	ROTIUM® Bioresorbable Wick 2 x 2 cm
FG-0043	ROTIUM® Bioresorbable Wick 4 x 3 cm
FG-0525	ROTIUM® Lo Pro Bioresorbable Wick 5 x 2.5 cm
FG-0630	ROTIUM® Lo Pro Bioresorbable Wick 6 x 3 cm
FG-0725	ROTIUM® Lo Pro Bioresorbable Wick 7 x 2.5 cm
BC-2012	BioCharge® Autobiologic Matrix 2 x 1.2 cm

PART #	DESCRIPTION
FG-0051	PHOENIX Wound Matrix® 20 x 10 cm
FG-0052	PHOENIX Wound Matrix® 10 x 10 cm
FG-0053	PHOENIX Wound Matrix® 5 x 5 cm
FG-0054	PHOENIX Wound Matrix® 4 x 3 cm
FG-0055	PHOENIX Wound Matrix® 2.5 x 2.5 cm
FG-0056	PHOENIX Wound Matrix® 1.6 cm disc
FG-0057	PHOENIX Wound Matrix® 7 x 7 cm

No special storage requirements. Recommended storage in original packaging, preferably in a cool and dry place.

ROTIUM is indicated for the management and protection of tendon injuries in which there has been no substantial loss of tendon tissue.

BioCharge is intended to be used in conjunction with suture anchors for the reattachment of tendon to bone in rotator cuff repairs.

PHOENIX is intended for use in the management of wounds. Wound types include: Partial and full-thickness wounds, pressure ulcers, venous ulcers, diabetic ulcers, chronic vascular ulcers, tunneled/undermined wounds, surgical wounds (donor sites/grfts, post-Moh's surgery, post laser surgery, podiatric, wound dehiscence), trauma wounds (abrasions, lacerations, second degree burns, skin tears) and draining wounds.

REFERENCES:

1. Becker, S., et al., Lactate stimulates endothelial cell migration. *Wound Repair Regen*, 2006. 14(3): p. 321-4
2. Beleckas, C. M., Bishai, S.K., & Badman, B. L. (2021). Rotator Cuff Repair Augmented with Interpositional Nanofiber Scaffold. *Arthroscopy Techniques*
3. Beleckas, C. M., Minetos, P., & Badman, B. L. (2023). Short-term radiographic and clinical outcomes of arthroscopic rotator cuff repair with and without augmentation with an interpositional nanofiber scaffold. *Journal of Orthopaedic Experience & Innovation*
4. Bokor DJ, Sonnabend D, Deady L, Cass B, Young A, van Kampen C, et al. Evidence of healing of partial-thickness rotator cuff tears following arthroscopic augmentation with a collagen implant: A 2-year MRI follow-up. *Muscles Ligaments Tendons J* 2016; 6:16-25
5. Bushnell BD, Connor PM, Harris HW, Ho CP, Trenhaile SW, Abrams JS. Retear rates and clinical outcomes at 1 year after repair of full-thickness rotator cuff tears augmented with a bioinductive collagen implant: a prospective multicenter study. *JSES Int* 2021; 5:228-37
6. Green, B.A., R.J. Yu, and E.J. Van Scott, Clinical and cosmeceutical uses of hydroxyacids. *Clin Dermatol*, 2009. 27(5): p. 495-501
7. Huang, C.B., et al., Short- and medium-chain fatty acids exhibit antimicrobial activity for oral microorganisms. *Arch Oral Biol*, 2011. 56(7): p. 650-4
8. McIntyre LF, Bishai SK, Brown PB, Bushnell BD, Trenhaile SW. Patient-reported outcomes after use of a bioabsorbable collagen implant to treat partial and full thickness rotator cuff tears. *Arthroscopy* 2019; 35:2262-71
9. Novakova, S.S., Mahalingam, V.D., Florida, S.E., Mendias, C.L., Allen, A., Arruda, E.M., Bedi, A. and Larkin, L.M. (2018), Tissue-engineered tendon constructs for rotator cuff repair in sheep. *J. Orthop. Res.*, 36: 289-299
10. Romeo, A., Easley, J., Regan, D., Hackett, E., Johnson, J., Johnson, J., Puttlitz, C., & McGilvray, K. (2022). Rotator cuff repair using a bioresorbable nanofiber interposition scaffold: A biomechanical and histologic analysis in sheep. *Journal of Shoulder and Elbow Surgery*, 31(2), 402–412
11. Seetharam A, Abad J, Baessler A, Badman BL. Use of a Nanofiber Resorbable Scaffold During Rotator Cuff Repair: Surgical Technique and Results After Repair of Small- to Medium-Sized Tears. *Orthop J Sports Med*. 2022 May 13; 10(5):23259671221094848
12. Slabaugh MA, Nho SJ, Grumet RC, Wilson JB, Seroyer ST, Frank RM, et al. Does the literature confirm superior clinical results in radiographically healed rotator cuffs after rotator cuff repair? *Arthroscopy* 2010; 26:393-403
13. Sun, S., et al., Lactic Acid: No Longer an Inert and End-Product of Glycolysis. *Physiology (Bethesda)*, 2017. 32(6): p. 453-463
14. Tang, S.C. and J.H. Yang, Dual Effects of Alpha-Hydroxy Acids on the Skin. *Molecules*, 2018. 23(4)
15. Wietlisback, L., et al., Revision arthroscopic surgery after rotator cuff repair with collagen graft: histologic evaluation of biopsy specimens from two patients. *JSES Reviews, Reports, and Techniques* 2 (2022) 412-418
16. Zhang, D., et al., (2020). Endothelial Lactate Controls Muscle Regeneration from Ischemia by Inducing M2-like Macrophage Polarization. *Cell Metab*. 31. 1136-1153 e71.
17. Bradley L Young, Alex Bitzer, Susan Odum, Nady Hamid, Shadley Shifferrn, Patrick M. Connor, Healthcare costs of failed rotator cuff repairs, *JSES Reviews, Reports, and Techniques*, Volume 3, Issue 3, 2023, Pages 318-323, ISSN 2666-6391, <https://doi.org/10.1016/j.xrrt.2023.03.008>.
18. Novakova, S.S., Mahalingam, V.D., Florida, S.E., Mendias, C.L., Allen, A., Arruda, E.M., Bedi, A. and Larkin, L.M. (2018), Tissue-engineered tendon constructs for rotator cuff repair in sheep. *J. Orthop. Res.*, 36: 289-299.
19. Alva-Murillo, et al., Short chain fatty acids (propionic and hexanoic) modulate antimicrobial peptide expression. *Vet Microbiol*, 2012.

Scientific compendium available by request



ABOUT ATREON ORTHOPEDICS, INC

Atreon Orthopedics is a Dublin, Ohio-based medical technology company advancing a new category of synthetic healing solutions. Manufactured in the USA, our portfolio of Autobiologic™ matrices is engineered to optimize the biologic microenvironment, promote native tissue remodeling, and support more reliable healing outcomes. Built on electrospun scaffold technology, Atreon provides a consistent, fully synthetic alternative to tissue-derived products across orthopedic and wound care applications.



Legal Manufacturer: Nanofiber Solutions
Distributed by: Atreon Orthopedics, Inc. 5164 Blazer Pkwy. Dublin, OH 43017 USA
614-429-1471 | www.atreonortho.com

© 2026 Atreon Orthopedics, Inc.
View U.S. patent information at <https://nanofibersolutions.com/technology>



AOI-00401 Rev A
June 2026